

“FROM THE PASTOR’S DESK

Dear Church Family,

How can it already be March? 2018 is zooming! For many of us who are reading through the Bible again this year, we find ourselves doing what often happens as a new chapter begins: we look backwards in remembrance and celebration. Moses is about to pass the baton, the Israelites are about to enter the Promised Land, but their leader takes time to force them to look back over all that God has done for them since they left Egypt. The obvious reason for this review is to create an indelible memory of God’s faithfulness. Their God gave them faithful provision even when they doubted and groaned. He remained consistent across the journey. Moses reminded them of this as they were about to step into the next challenging chapter.

It is hard for me to imagine, but this July, Easthaven will have been in our “new” building for 13 years. It’s really not even fair to call it a “new building” anymore. Wouldn’t it seem odd to call a teenager a baby? ...and they certainly wouldn’t appreciate it. So, here we are, 13 years later, about to step out into another challenging chapter. We will break ground on the first two dormitory buildings on the campus of Glacier Bible College within the next 30 days and we will also begin promoting a capital campaign to construct Phase III of our own campus to provide much needed additional education space. On the one hand, wow! On the other hand, let’s take a few moments to remember together. It was the spring of 2004 when people began coming. Over the next 14 months, over 800 people came and volunteered to tie rebar, rake gravel, build forms, construct steel frames, sheet with plywood, stuff insulation, roll trusses, sheet a roof, plumb, pull wire, hang sheetrock, paint, trim, and on and on the list goes until early July when we moved in. When it was done, there was no explanation for how any of it happened, but there was no denying that we had been a part of an incredible God-moving story. He showed us that when He guides, He provides.

So, here we are, 13 years later. He has been guiding us specifically for the last 12 months and has brought us to where we find ourselves today. At the college, the donor’s house is built and includes a spacious and beautiful basement for the classroom and dining area. God has already provided over \$200,000 for the project this summer, and the list of building volunteers is growing daily. I promise you, we are in the front row seats to see an incredible thing happen again. Don’t blink or miss out; it’s going to be fantastic.

And don’t miss out on doing your part. In the next few weeks, we will begin recruiting teams for painting and flooring. We also need a team to finish out a bathroom and a team to set a few cabinets. There will be something for everyone to jump in and help with. When it is completed, we will again look back and celebrate our faithful God. You have got to love this journey of faith!

Honored to serve with you,

Pastor Daniel <><

UPCOMING EVENTS

CZECH MISSION TRIP FUNDRAISER

Cinnamon rolls will be for sale on March 10/11 after each service to support the upcoming mission trip.

NEW MEN'S BIBLE STUDY

Act Like Men Bible study by Joby Martin begins Wednesday, March 7, meeting at 6:15PM at 15 Mountain Park Ln in Kalispell.

EASTER WEEKEND
2 0 1 8

EASTHAVEN
/MAIN CAMPUS/

GATEWAY
/235 NUCLEUS AVENUE/

SAT/MARCH 31
6PM /MODERN/

SUMMIT LIFE
/MOUNTAIN CINEMA 4 THEATER/

SUN/APRIL 1
10AM

SUN/APRIL 1
8AM /CLASSIC/
9AM /CLASSIC/
10:30AM /MODERN/
11:30AM /MODERN/

SUN/APRIL 1
9:29AM

//CHILD CARE AT ALL SERVICES//

MEN'S MINISTRY



MARCH 16-18 | TLC RETREAT | EASTHAVEN.CHURCH

STEPPING INTO YOUR ROLE AS THE SPIRITUAL LEADER

What does the Bible tell us? What is at stake? We'll take a look at spiritual leadership as a husband and as a father with action items and encouragement.

CHECK IN: Friday (Mar 16) from 4-6:30PM

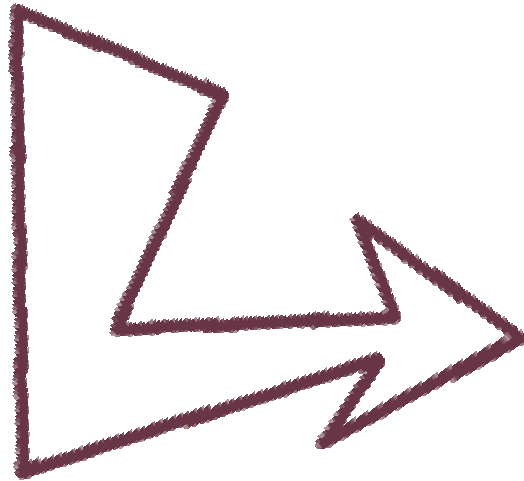
CHECK OUT: Sunday (Mar 18) before noon

WHAT TO BRING: A friend or two! Warm clothes, sleeping bag, pillow, ear plugs, clothing, towel, toiletries, Bible, pen, notepad, chair for around the fire, 4-wheeler, snowmobile, potato launchers, ice fishing gear, archery gear, etc.

GETTING THERE: Hwy 2 West past mile marker 76 and turn LEFT on ACM Rd—593 ACM Road, Libby, MT 59923

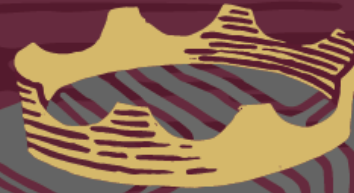
SIGN UP AT EASTHAVEN.CHURCH OR IN THE ATRIUM

OUR NEXT SERMON SERIES
STARTING IN APRIL



THE GOOD KING

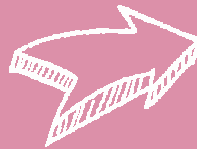
Doing right when all seems wrong



EASTHAVEN
Baptist Church

A STUDY OF
KING JOSIAH

WOMEN'S MINISTRY



WELL

Women Encouraging, Learning, and
Loving the Lord and Each Other

WELL GATHERING

Saturday, March 10 at 9:30am

Come fellowship with other women at our monthly meeting and potluck brunch! Join us for our celebration of the Feast of Esther. Bring your favorite dish. Are you made for a time such as this? Come learn more. Childcare will be available. Sign up for childcare by emailing Valerie at valgibson56@gmail.com. See you there!

ATTENDANCE | GIVING RECORDS

FEBRUARY AVERAGES

WORSHIP ATTENDANCE AT ALL CAMPUSES: 723 | CHURCH PLANTS: 68 (includes week with cancelled services)

FINANCIALS (as of February 28, 2017):

GIVING TO DATE: \$113,778 | BUDGET TO DATE: \$214,035